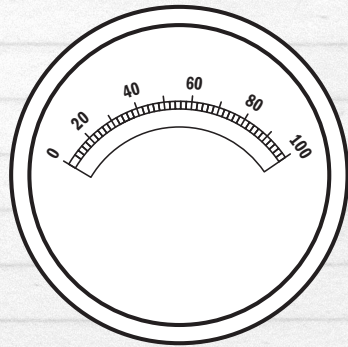
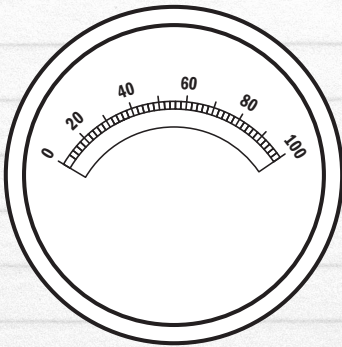
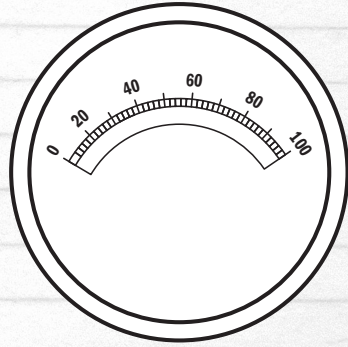
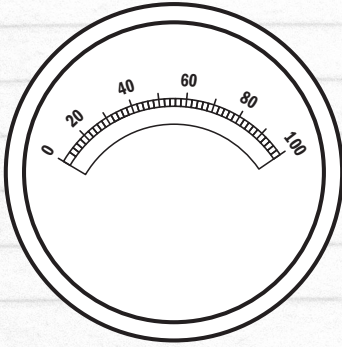


These might be useful



"NIXIE" NUMERICAL INDICATOR TUBE

The Nixie tube is a long-life, high quality, cold cathode numeric indicator tube. It can display the numerals 0-9. Driver circuitry cost savings can be obtained because the tube has been designed for high peak current low duty cycle pulsed operation.

Excellent readability is afforded by its bright, clear characters which have an optimum aspect ratio. Figure 1 shows the pin connections for the tube.

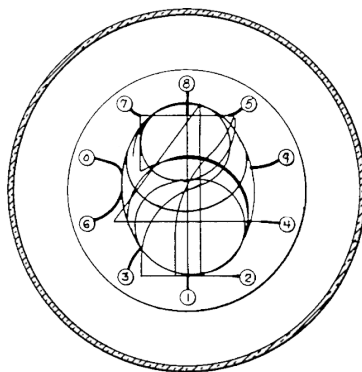


Fig. 1 pinning diagram

ELECTRICAL SPECIFICATIONS

Absolute ratings

Ionization voltage	+170 Vdc max
Supply voltage	+180 Vdc min
Peak Anode current	17 ma max
Average total power dissipation	0.25 watts

Typical operating conditions

Supply voltage	+200Vdc nominal
Peak anode current	14ma typical
Pulse durations	100 usec
Duty cycle	2 msec

Test conditions

Peak anode current	11 ma
Pulse duration	100 usec
Repetition rate	500 cps

MECHANICAL CHARACTERISTICS

Pinout	Fig. 1.
Weight	0.4 oz
Lead finish	Hot dip tin
Max viewing distance	24 feet
Colour	Neon red

7 1

2 6 58 9 34

